



## Barnet SACRE

### Standing Advisory Council on Religious Education

### Annual Report 2023 – 2024

1	<b>Introduction:</b>	Page
a	Chair of SACRE Introduction	2
b	Purpose of the report	3
c	Barnet context statement	3
d	Overview: Barnet SACRE Meetings 2023 - 2024	4
<b>2</b>	<b>Religious Education Statutory Responsibilities</b>	
a	The Local Agreed Syllabus and RE in schools	5
b	Barnet Agreed Syllabus Conference (ASC)	6
c	Standards and monitoring of RE (and celebrating Ci)	7
d	Teacher training and materials and advice for schools	9
e	Other information: withdrawals/ complaints	9
f	Advice to the LA	9
<b>3</b>	<b>Collective Worship Statutory Responsibilities</b>	
a	Standards and monitoring of Collective Worship	10
b	Determinations: advice to LA	10
c	Teacher/ school training provided	10
<b>4</b>	<b>Links with other bodies</b>	
	National bodies	10
<b>5</b>	<b>SACRE involvement locally</b>	
	Local SACRE Links and SACRE involvement locally	11
<b>6</b>	<b>Barnet SACRE's own arrangements (statutory responsibilities) including:</b>	
a	Professional and administrative support and how the LA supports the SACRE (clerking, adviser, links to council initiatives)	12
b	Membership, representation & recruitment - quoracy, issues and successes with recruitment	12
c	Training for SACRE (and ASC) members	12
d	Finance given to SACRE for its work	12
<b>7</b>	<b>Appendices</b>	
	Appendix A: Additional data on Examinations provided by Barnet LA Appendix B: Full SACRE Membership list 2023-2024 Appendix C: Development Plan Grading document	13
<b>8</b>	Circulation details of the Annual Report	14



## Introduction

### (1a) Statement from the Chair of Barnet SACRE: Kevin McSharry (January 2025)

As Chair of Barnet SACRE, I am pleased to present this report on the work overseen by SACRE in 2023-24. I have been a resident of Barnet for over eight decades; and have served on SACRE as a representative of the local community since 1994, being elected Chair in 2015. I am a founder member and one time chair, for many years, of the Colindale Communities Trust; and a teacher for forty-two years, latterly as Head, at St. James' Catholic High School, Colindale. The Borough of Barnet has been seminal for me, and I welcome the privilege to serve as Chair of SACRE.

My fulsome thanks to the members of Barnet SACRE faith representatives, teachers and Councillors and my vice chair Vicky Golestaneh for their service, their time and their expertise to and for the work of SACRE and the Agreed Syllabus Conference (ASC). Jan McGuire, our golden Religious Education Adviser, has informed and supported our work, together with Neil Marlow and Jennifer Brodtkin for and on behalf of the Local Authority. My thanks to our Clerk to SACRE, Maria Gabrielczyk.

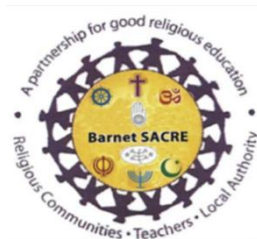
Three SACRE meetings were held during the school year. Our final meeting was a celebration and Agreed Syllabus Conference launch of the new Ann Taves Religious Education Worldviews Curriculum. This was a momentous occasion and marked an important stage of a bold and collaborative curriculum design process that started in 2021. At this event the SACRE entered into important dialogue before agreeing the document should be submitted to the Department of Education. Members of SACRE, Representatives of Barnet's diverse Faith and Worldview Groups, Councillors, the Mayor and Mayor's Escort, Head Teachers, Teachers, Parents and Families were present for the community celebration and syllabus event. The celebration recognised the excellence in religious education in Barnet schools. The event was garlanded by a performance of the Barnet SACRE Interfaith Choir, under the leadership and indeed founder of the Choir, SACRE member, Dr Alan Shaw.

SACRE's work during this period, specifically, has focused on the Agreed Syllabus Conference process. Fulsome thanks to the ASC lead writer and editor Jan McGuire and ASC members: Sally Giovanelli, Sophia Tsiaparis, Jack Robertson, Tim Sanders, Gill Vaisey and Ruth Marx for their dedication and hard work in ensuring that SACRE creates a high-quality Religious Education Syllabus that meets the needs of our pupils and students. We were fortunate, beyond words, to have the support and active participation of Dr David Robertson as an academic adviser alongside Professor Ann Taves, a world-renowned authority on Religious Studies, in the development of our new Syllabus.

Supporting and upskilling the teachers of Religious Education has remained a clear focus, with Barnet NATRE affiliated Network and CPD events being offered termly for Teachers to participate in sessions covering Religion, World views, Ofsted and National Updates.

Barnet SACRE remains a very strong, enthusiastic volunteer team with tremendous experience, expertise and dedication in providing the very best Religious Education experience.

**Kevin McSharry** (Chair of Barnet SACRE, January 2025)



## Introduction

### (1b) Overview Purpose of the report

Religion and worldviews remain significantly important in our richly diverse Borough, nationally and globally. Religious Education is a valuable and enriching curriculum subject. It is important in its own right and makes a unique contribution to the spiritual, moral, social, and cultural (SMSC) development of pupils and supports wider community cohesion. The Government is keen to ensure all pupils receive high-quality Religious Education.

The Education Act 1996, Section 391 (6) and (7) requires that each year the Standing Advisory Council on Religious Education (SACRE), from each Local Authority, will publish a report as to the exercise of its functions and any action taken by the representative groups on the Council during the last preceding year.

This entails:

- advising the Local Authority on Religious Education given in accordance with the Agreed Syllabus
- monitoring the provision and quality of Religious Education taught according to its Agreed Syllabus, together with the overall effectiveness of the syllabus
- providing advice and support on the effective teaching of Religious Education in accordance with the locally Agreed Syllabus
- providing advice to the Local Authority and its schools on methods of teaching, the choice of teaching material and the provision of teacher training
- in partnership with its Local Authority, considering whether any changes need to be made in the Agreed Syllabus or in the support offered to schools in the implementation of the Agreed Syllabus, to improve the quality of teaching and learning of RE
- offering advice to the Local Authority, and through the Local Authority to schools, concerning how an existing Agreed Syllabus can be interpreted to fit in with a broad, balanced, and coherent curriculum.

### (1c) Barnet context statement

The ASC, that has been formally meeting during this period: 2023-2024, has been focusing on the religion and worldviews on Barnet's 'doorstep'. The ASC has considered the groups that represent the largest numbers: Christian, Jewish and Islam and the growing 'non-religion' group.

The religious demographic data for the 2023-2024 report reflects the most recent ONS data for the Borough from the March 2021 Census that was released for analysis in late November 2022.

Area Code	Area Name	No Religion	Christian	Buddhist	Hindu	Jewish	Muslim	Sikh	Other religion	Not answered
284 E09000003	Barnet 2011	No 75,600 19.4%	No 152,500 39.2%	No 1.9%	No 4%	No 19.2%	No 11.8%	No %	No %	No %
	2021	78,684 20.2%	142,321 36.6%	4,158 1.1%	22,105 5.7%	56,616 14.5%	47,688 12.2%	1,524 0.4%	5,192 1.3%	31,056 8.0%



The data reveals that the Christian population remains the largest religious group within the Borough, with 142,321 individuals identifying as Christian in 2021. The Christian population has decreased by 2.6%, that equates to 10,179 fewer individuals identifying as Christian on this most recent 2021 census. There has similarly been a 4.7% decrease in individuals identifying as Jewish. Whilst the Christian and Jewish population remain the two dominant religious groups within the Borough even when taking the decreases into consideration, the data reveals that the Muslim population has experienced a 0.4% growth and remain the third largest religious population in the Borough with 47,688 individuals identifying as Muslim. The Hindu population has also experienced a growth of 1.7%. SACRE is aware that 20.2% or 78,684 individuals (an increase of 0.8%) in the Barnet population identify as having 'no religion'. This is a significant number and SACRE is considering the implications of this data in the discussions about worldviews underway within the ASC (Agreed Syllabus Conference).

Census information shows that Barnet is currently the second largest borough, to Croydon.

The Barnet population is becoming increasingly diverse, driven predominantly by the growth of the existing population. Meeting the needs of these growing communities may be a key challenge. Barnet SACRE is aware of the challenge faced by the LA and welcomes deeper engagement to support the community and local government.

#### **(1d) Overview: Barnet SACRE Meetings 2023 - 2024**

Every Local Authority must convene a Standing Advisory Council on Religious Education (SACRE). Barnet SACRE convenes three times each year.

##### **Meeting dates for 2023-2024**

- Wednesday – 8th November 2023 at 5-7pm (virtual meeting)
- Wednesday – 6th March 2024 at 5-7pm (virtual meeting)
- Wednesday – 12th June 2024 at 5-7pm (in person celebration)

It comprises of four statutory groups: Committee A, B, C and D members.

We have adopted a 'hybrid' meeting routine. We currently hold two virtual meetings, and the final meeting of the year is a face-to-face meeting and celebration opportunity that was hosted at Ashmole Academy School. Attendance at meetings is consistent and quorate. We continue to ensure the membership reflects the demographic. The SACRE are aware of vacancies and are endeavouring to attract representation of as many of the religion and worldview groups in Barnet.

Our experienced Chair, Kevin McSharry, has an excellent grasp of the educational and demographic issues of the local Barnet community. The Chair is proactive in securing organisational and financial support for the SACRE to meet its statutory responsibilities.

Barnet SACRE would like to extend thanks to Kevin McSharry for his commitment to supporting SACRE, Religious Education and the Religious Education Adviser.



Each meeting follows an agenda format that aligns with the formal Annual Report documentation. This allows for transparency and keeps an accurate record of the meetings to summarise in the reporting process at the end of each year. The 2023-2024 SACRE follows the NASACRE template (October 2021) in line with national guidance. The Annual Report process is also one of reflection, and this raises areas of development that SACRE has identified. This is an ongoing process. Each Annual Report comments on areas that we aim to address and improve upon, whether this is attracting new membership, offering additional training and support to RE teachers and schools or reviewing issues that have arisen in the Agreed Syllabus. The minutes of the meetings accurately record these discussions and are sent to Barnet/ BEL's to be added to the SACRE and BEL's education pages.

In addition to the formal SACRE meetings for this period, Barnet SACRE has formally convened the ASC to review the Barnet Agreed Syllabus (2021-2025) under the leadership of Jan McGuire and alongside representatives of members of the Barnet SACRE. \*\*Please see further information on the ASC in point (2b)

## **2. Religious Education Statutory Responsibilities**

### **(2a) The Local Agreed Syllabus and RE in schools**

The Barnet Agreed Syllabus for Religious Education provides statutory requirements for planning, teaching and assessment procedures. The Agreed Syllabus documents are offered to all schools in the Borough.

The current Barnet Agreed Syllabus was relaunched in 2019. Barnet SACRE was intentionally involved in researching and creating a radically different Agreed Syllabus during this reporting period of 2023-2024. The intended new Agreed Syllabus is based on the academic research of Prof Ann Taves. The Agreed Syllabus will follow the six big questions that Ann Taves says humans have asked for millennia. SACRE decided to take this route as the Ann Taves six big questions could be answered by all children within the diverse population of the borough. The intention was to create an inclusive Religious Education learning experience. The ASC process has been financially supported by Barnet council, the Farmington Fellowship Programme and through a grant from Culham St Gabriels Trust. Barnet SACRE are grateful for this partnership approach. SACRE is grateful to Neil Marlow, in his mediator role, for his continued support in assuring that SACRE is supported in its work.

The Department for Education and NASACRE confirms that SACREs will be funded through the central school services block (CSSB) at an estimated funding level of 2% of the CSSB.

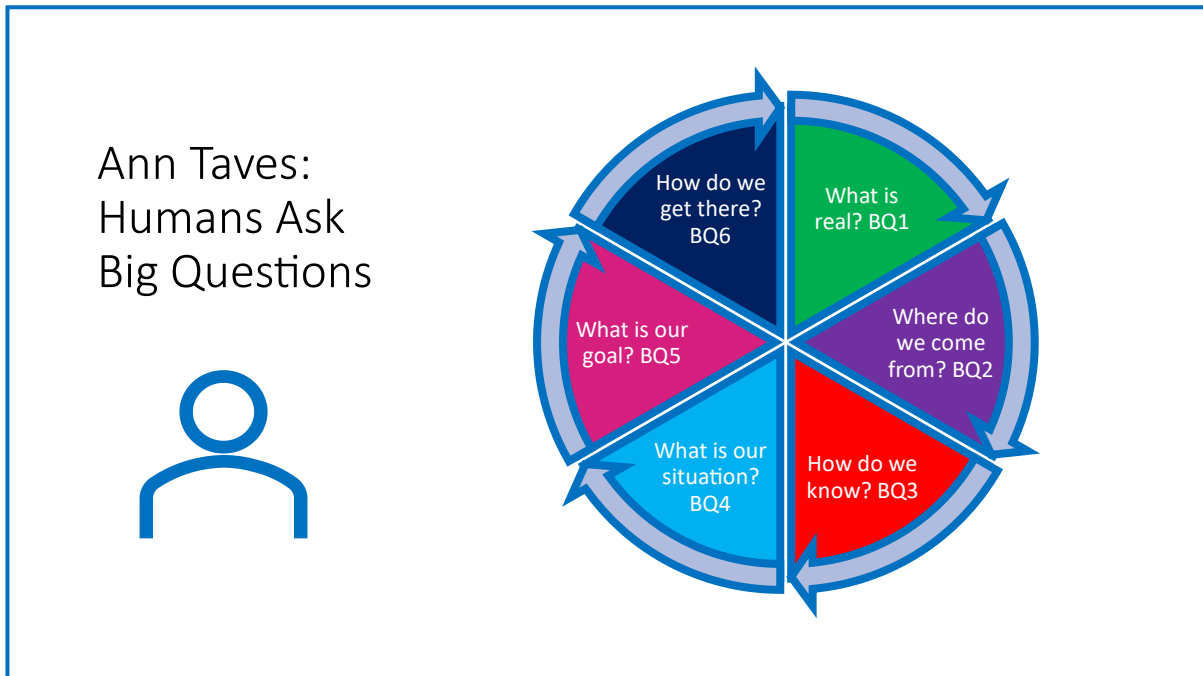
BEL's provides a series of Religious Education Network training events to support schools and teachers with curriculum planning and gaining familiarity with the Barnet Locally Agreed Syllabus. The sessions run once a term with additional sessions for new coordinators of Religious Education and 'surgery' style bespoke sessions for schools with the Associate Adviser for Religious Education, Jan McGuire. The surgery sessions are well received by schools that are developing their RE curriculum in alignment with the Barnet syllabus.

The Barnet Syllabus provides a manageable curriculum structure for schools to implement, and in the broadest sense fits the Ofsted Religious Education Review May 2021 comment around 'golden



threads’ or key areas of learning that can be sequentially taught for progressive learning. The syllabus is also intentionally mapped to the REC criteria.

The six threads, or Big Questions, within the Barnet Syllabus are:



The Religious Education Adviser for Barnet has concentrated on sharing the importance of curriculum planning tools, Curriculum grids and incorporating the ‘Golden Threads’ to build sequential learning in the classroom. In addition, a focus on upskilling the non-specialist RE teachers in school, alongside building rich and deep lessons has been a key concern. This agenda has been delivered through a series of training session on the VAT pedagogy: encouraging teachers to build rich lessons through vocabulary, artefacts, and texts.

**(2b) Barnet (ASC) Agreed Syllabus Conference 2022 – 2023 (Full ASC convened between 2021-2024)**

The ASC involved a scoping and gathering exercise to have information on as many different kinds of syllabi as possible. The ASC members discussed the syllabi presentations and scored them accordingly for suitability for Barnet schools.

The ASC decision was to write a Barnet syllabus using the respected work of Professor Ann Taves as a framework, using funding and support from the national and local community.

Funding has been secured from the Borough (£18,000 for the three-year process) to complete the full scoping exercise, followed by initiating a full ASC (Agreed Syllabus Conference). Further funding has been sought from Culham St Gabriels Trust and from the Farmington Scholarship programme to support the teachers in their involvement in the writing process.

The new syllabus aims to be aligned to the academic work of Ann Taves (six BQs) as well as the major new reports from the Religious Education Council of England and Wales, the THEOS Report



outlining major recent changes to religion and worldviews education and the Ofsted Religious Education Review of 2021.

The ASC will run until the ratification of the syllabus and submission to the Department of Education (2025).

The following SACRE and community members have actively supported the development of the Ann Taves Religion and Worldviews Curriculum on the ASC 2023-2024.

Kevin McSharry- SACRE Chair

Neil Marlow- Director of School Improvement, BELs, SACRE member

Jan McGuire- Religious Education Adviser to SACRE/ BEL's (lead writer and editor)

Louise Yarwood- Learning Network Inspector, BEL's (retired)

Jennifer Brodtkin – Head Teacher and Learning Network Inspector, BEL's

Vicky Golestaneh (faith member/ Vice-Chair SACRE)

Sally Giovanelli - RE teacher and SACRE member

Jack Robertson – QE Boys School – Teacher and SACRE member

Sandra Teacher - Inspector of schools and SACRE member

Dr Alan Shaw - SACRE member and education specialist/ SACRE Interfaith Choir

Panos Fellas (Humanist representative)

Nicola Santamaria (Roman Catholic representative)

Co-Opted Members of the ASC

Tim Sanderson – Ashmole Academy – Teacher

Sophia Tsiaparis – Underhill School – Teacher

Ruth Marx – Adviser

Gill Vaisey – Adviser

Prof Ann Taves – Professor – Academic Adviser

Dr David Robertson – Academic Adviser

## **(2c) Standards and monitoring of RE**

Barnet SACRE has resumed monitoring RE during the period of 2023 – 2024.

Monitoring takes place through engagement with RE teachers attending the regular BEL's training events, affiliated to NATRE, and one-to-one bespoke RE surgeries provided by the RE adviser, including whole school staff training around curriculum development based on the Barnet syllabus.

SACRE also, with the help of the Borough, scrutinises Ofsted inspection reports and exam data. This informs conversations with schools. SACRE retains links with teacher groups, completes website trawls and recognised RE teachers at the celebration event (June 2024). SACRE celebrates the success of schools at the June event (Ofsted, national and local awards for RE), as well as raising the profile and benefits of teaching RE within the wider community.

SACRE continues to support improvements to RE within schools by offering training and bespoke support.

## **(2Ci) Monitoring and Celebrating RE 2023 - 2024**



## June 2024 Barnet SACRE Celebration Event

The SACRE monitoring process is partly used to identify schools where excellent RE practice can be celebrated and held up as a model of excellence and encouragement in the RE community. The Religious Education SACRE Award Celebration Event in June 2024 at Ashmole Academy was also used to showcase the new Barnet Ann Taves religion and worldviews Agreed Syllabus. This culminated in SACRE discussion, voting and suggested amendments to the Agreed Syllabus to make it the best document possible before publication.

The welcome was followed by the Barnet SACRE Interfaith Choir directed by Dr. Alan Shaw.

The Chair of SACRE welcomed the worshipful Mayor of Barnet, who would be giving out the awards.

The Mayor of Barnet presented the Kevin McSharry Religious Education award 20024 to the following primary and secondary RE teachers for outstanding RE teachers/subject leaders:

1. St Vincent's Primary School.
2. Ashmole Academy (Secondary)
3. St Mary's CE Primary School
4. Summerside Primary Academy
5. JCoSS (Secondary)

## Religious Education Examinations: 2023- 2024: Quality of Provision of Religious Education of Standards

Appendix A: Additional data on Examinations provided by Barnet LA

### Monitoring of provision 2023- 2024 Primary Schools

Members of SACRE have links with primary and secondary schools through their teaching roles and faith communities within the Borough. SACRE continues to offer training and support to schools via the BEL's/ CET website.

SACRE monitors the Barnet school websites to audit RE.

SACRE depends on BEL's support in sharing data gathered during school visits and Ofsted reports relevant to this RE monitoring role. SACRE monitors the Ofsted reports to note progress and excellence in SMSC and RE delivery as well as issues requiring support. This is ongoing.

### 2023- 2024 Monitoring of Secondary Schools:

Academies bring challenges in terms of accountability. Barnet SACRE aspires to have positive working relationships with academies that continue to use the locally Agreed Syllabus. Our ASC team includes an Academy school.

SACRE also monitors the Ofsted reports to note progress and excellence in SMSC and RE delivery as well as issues requiring support. This is ongoing.

### Ofsted Reports 2023-2024:





The Barnet Education and Learning Service, Director of School Improvement and Traded Services SACRE education lead Neil Marlow, acts as the conduit between the LA and SACRE. BEL's keeps the SACRE informed of Ofsted inspections and Bel's reports on comments related to religion and worldviews and SMSC that may require celebration or action. Nationally the picture for RE reflects the overall picture and grading for a school. Mostly, the reports do not make specific reference to RE but report on social, moral, spiritual, and cultural development.

Where it has been made known that a school is not meeting statutory advice, SACRE will contact the school and offer support to the BEL's team. Where excellent RE provision is noted, the SACRE awards the school at the annual celebration event and works with the teachers and school to share this excellence within the community.

### **(2d) Teacher training and materials and advice for schools**

Barnet (BEL's/CET) provides regular opportunities for schools to engage with worldviews and Religious Education training sessions, NATRE affiliated network sessions facilitated by the associate Religious Education adviser to SACRE, and bespoke curriculum support sessions.

Commissioned projects including those linked to Research awards (Farmington/ NASACRE/ Westhill/ CSGT/ Young Ambassadors/ WIRE award) have been shared and offered to schools to increase engagement and interest in RE. The RE adviser has provided schools with materials to support them in improving their RE in schools through the adoption of the different projects.

Advice on RE, resources and materials to support the delivery of the Barnet agreed syllabus, as well as RE in general, have been shared in the Head Teachers bulletin collated by BEL's and added to the BEL's education website. Curriculum grids have been produced to support schools with their planning around progression, sequential learning, 'golden threads' and 'intent, implementation and impact' themes encouraged by the Ofsted review of May 2021. National materials such the REC report around the National Statement of Entitlement and the THEOS report and animated clip about religion and worldviews and looking through 'lenses' has also been shared.

2025 will mark the launch of the Barnet Agreed Syllabus: Ann Taves Religion and Worldviews Curriculum and this will involve an intensive support, workshop and training programme to ease the transitional period.

### **(2e) Other information**

**Withdrawals:** There have been no withdrawals brought to the attention of Barnet SACRE 2023 – 2024. Information and guidance materials on the determination process have been added to the Barnet website. BEL's and SACRE provide annual reminders to the Head Teachers bulletin about information held on the BEL's/SACRE area with regards to guidance and support SACRE can provide schools.

**Complaints:** Barnet SACRE has a role in investigating complaints against schools in relation to RE and Collective Worship. In 2023-24 there were no such formal complaints to deal with.



## (2f) Advice to LA

**Borough Advice:** SACRE provides advice to the Local Authority (Borough) through the RE Adviser, and the Barnet Education and Learning Service, Director of School Improvement and Traded Services SACRE education lead Neil Marlow, who brings concerns from schools and Governors to SACRE. SACRE in turn discusses the issues, responds proactively, and if required establishes small working parties and publishes requested advice.

Advice to the LA/ BEL's is provided when issues are brought to the attention of the RE adviser to SACRE/ BEL's, this has included discussion over recent Ofsted reports, community cohesion within our diverse community that also has the largest Jewish population in the London. 'Solution not Sides' school training and support was shared with all schools.

Governors school training is offered by the SACRE Religious Education adviser to provide support to Governors leading on RE and SMSC in their schools.

## 3. Collective Worship Statutory Responsibilities

### (3a) Standards and monitoring of Collective Worship

SACRE (2023-2024) had contact with RE teachers attending the BEL's training events and Headteachers engaging with BEL's and the RE adviser through bespoke support sessions. Barnet SACRE reminds schools of the importance of collective worship. Links to support and guidance are provided on the Religious Education and SACRE area of the BEL's website. The RE adviser provided schools with links to materials that they could use for collective worship. The Diocese is also a helpful resource and supports the SACRE at meetings.

SACRE is considering how best to monitor Collective Worship, and continues to scrutinise Ofsted reports, has conversations with schools and teacher groups and website trawls.

### (3b) Determinations: Barnet SACRE's Statutory Role 2023-24

Barnet SACRE has a statutory role in considering and granting determinations.

What is Determination? The Education Reform Act of 1988 (sections 6, 7, 9, and 12) entitles schools to apply to the SACRE for a 'Determination'. This allows the school to adjust the legal requirements to enable collective worship of a different character to take place for **some** or **all** pupils in the school. Determinations are made where a school, on behalf of a group of parents, requests Collective Worship other than that set down by statute. There were no determinations in 2023-24 for Barnet SACRE to consider. SACRE and the RE adviser provide materials and guidance on the BEL's website as well as sharing materials in the Head Teachers bulletin. <http://www.nasacre.org.uk>

### (3c) Collective Worship and Training 2023 - 2024

Barnet SACRE has not commissioned any formal training on Collective Worship or the Determination process for Headteachers, Governors and teachers in schools during this recent period. SACRE members continue to generously offer schools their time and expertise. Faith representatives offer to deliver assemblies, support curriculum planning, and provide guidance to individual



teachers. SACRE aspires to have a more active support role with schools and teachers in the Barnet area.

#### 4. Links with National Bodies

**NASACRE Conference and regular bulletins:** Barnet attended the annual NASACRE conference. The conference provided an opportunity for members to attend useful workshops on data, and worldviews education, all of which are useful in shaping the SACRE going forward. The new members of SACRE were also signposted to the NASACRE virtual 'New Members' training event.

**REC:** Barnet has benefited from the data provided by the REC to help steer discussion, funding and raising awareness of the benefits of delivering high quality RE. In addition the National Statement of Entitlement materials (draft) have been a useful addition to the Barnet ASC work. Professor Trevor Cooling has generously showed interest in the Ann Taves ASC work and this has been appreciated by the teachers.

**Farmington:** Two Barnet teachers successfully completed a Farmington Scholarship in 2023 where they were studying the academic work of Professor Ann Taves on religion and worldviews linked to their work on the Barnet ASC Agreed Syllabus writing team.

**AREIAC:** The RE Adviser is on the AREIAC Executive and represented Barnet at the London meeting. The meetings provide an excellent network of RE leads and the sharing of best practice and ideas for schools based in London. These meetings are used to inform training for teachers.

**NATRE:** Barnet SACRE continue to provide an affiliated NATRE network to Barnet schools to help to support their delivery of Religious Education in schools. The RE adviser attends NATRE training updates and the NATRE conference and shares regular NATRE updates with teachers attending training events. All schools in Barnet have access to the excellent bank of teaching resources.

**RE-Hubs:** Members are informed of religious education links to training and support to members that may wish to become speakers in schools, or enter into conversation or take advantage of other opportunities offered on the website.

#### 5. Local SACRE Links and SACRE involvement locally

**Dioceses:** Barnet continues to benefit from the attendance of Diocesan Link Advisers from two dioceses at our SACRE meetings. The representative shares the work of the Diocese within local schools and provides a clear link to SACRE. We hope to collaborate more closely with the Diocesan adviser going forward, especially with regards to primary training and monitoring of RE.

**Inter Faith Groups:** The Barnet SACRE members bring a wealth of inter-faith network links to the forum. This benefits SACRE immensely and helps to keep the membership of SACRE well balanced. Members of the wider interfaith community attended the SACRE schools' celebration event in June 2024.

**Holocaust Memorial HMD:** Barnet are fortunate to have highly active links with the local Jewish community and organisations. Barnet have shared their contact details with all schools. **Holocaust Memorial Day** with its annual varied focus and related themes enables schools to explore critical



moral issues, investigate human behaviour, respond to inspirational stories, and consider what it means to be a responsible British citizen.

**Governor/ Head teacher training:** Religious Education training sessions are offered to support Governors and Head teachers in meeting their legal requirement to provide high quality RE in schools, this support is ongoing.

## 6. Barnet SACRE's own arrangements (statutory responsibilities)

### (6a) Professional and administrative support and how the LA supports the SACRE (clerking, adviser, links to council initiatives)

Barnet LA manages the Barnet SACRE through the Barnet Education and Learning Service team (BELS). Neil Marlow, Director of School Improvement and Traded Services (School Improvement Team 2023-2024) has provided excellent support and guidance to our Religious Education Adviser, Jan McGuire. SACRE feels well supported by the team. The Director for School Improvement acts as the conduit between the LA and SACRE on issues such as finance, data, and councillor representation. The Education and Learning Service has appointed an experienced clerk to attend each SACRE meeting. We are fortunate to be served by Maria Gabrielczyk (October 2020 -) who minutes the meetings and provides the Chair and Religious Education Adviser with valuable, although limited support.

Barnet LA, under the management of BELS, has continued to provide support to SACRE and its work to encourage the development of quality religion and worldviews, Religious Education and SMSC in schools. The Barnet ASC has been well supported, both financially and with personnel that attend meetings and offer academic and practical solutions.

SACRE has been working alongside BELS to update the SACRE website area, to raise the profile of SACRE and raise school awareness of the role and support that SACRE can provide them in school. This is ongoing.

### (6b) Membership, representation & recruitment - quoracy, issues and successes with recruitment

BEL's works in partnership with the chair and members of the SACRE to identify gaps with representation of the local faith communities and wider group membership. This is an ongoing process and has seen successful recruitment of new members, including teaching representatives from a Primary and a Secondary school. Meetings have been consistently quorate.

Appendix B: Full SACRE Membership list 2023-2024

### (6c) Training for SACRE (and ASC) members

All new members are invited to a training session that is delivered by the RE adviser at the end of formal SACRE meetings when required. In addition, NASACRE has also offered a national training session that members have also been signposted to. The ASC team are mentored and supported throughout the ASC process by the RE Adviser and additional academic support from the team. The London RE-Hub also offers the opportunity for members to enter conversation with other Borough's, this has been advertised.



#### **(6d) Finance given to SACRE for its work**

The LA currently supports the funding of the Religious Education Advisers time, of twenty days a year. Finance is allocated to cover the role of the Religious Education Adviser, Jan McGuire, who provides specialist RE advice and governance support, writes the Government/ NASACRE annual reports and commissioned bids, attends AREIAC/ NASACRE/NATRE meetings or conferences and deals with day-to-day matters.

In addition to the twenty days funding for the Religious Education adviser, Barnet BEL's invites the Adviser to deliver RE training and offer school support on a bespoke basis.

Supporting and upskilling the teachers of RE has remained a clear focus this year, with Barnet NATRE affiliated Network and CPD events being offered termly for teachers to participate in sessions covering religion and world views, Ofsted and national updates.

SACRE's work has focused on the Agreed Syllabus Conference process.

The ASC is also being funded by the Borough. £18,000 has been allocated for the three-year process-equating to about £6,000 each year to fund the writing and working-party process. ASC members are receiving payments for their work and SACRE is overseeing the development of a high quality RE syllabus that meets the needs of the pupils in Barnet. Barnet completed bids to Culham St Gabriels Trust and were successful in this process, leading to an additional £10,000 to pay for the writing team. This finance has now ended.

2023 – 2024 was a particularly busy and intensive development period for the ASC writing team. The adviser researched at University of Cambridge in order to support the team. Prof Ann Taves graciously edited the teams work. Dr David Robertson, Open University, also provided support to the ASC team as a critical friend. The team were invited to speak at the AREIAC conference, and a paper was requested from Culham St Gabriels Trust for the RE Research of the Month publication.

## **7. Appendices**

A: Additional data on Examinations provided by Barnet LA

B: Full SACRE Membership list 2023-2024

C: Development Plan



## 8. Circulation details for this Annual Report

The report was shared and discussed at the November 2024 SACRE meeting and it will be formally agreed by Barnet SACRE by an electronic vote February/March 2025 and formally noted in the March 2025 meeting.

The report will be sent to the CEO of Barnet BELs to circulate to Head teachers and teachers through the schools circular. The report will also be added to the BELs/ Barnet Borough/ Education/ SACRE/ RE page of the website.

The report will be shared with Barnet council: submitted by SACRE members in office to raise awareness of the SACRE and the statutory requirements of RE in schools.

The Report will be sent to NASACRE and to the Department of Education as formally required.

The SACRE clerk will send a copy of the SACRE report to the Department for Education: [ministers@education.gov.uk](mailto:ministers@education.gov.uk)

The report will also be emailed to NASACRE for publication on its website: SACRE reports: [admin@nasacre.org.uk](mailto:admin@nasacre.org.uk)

**If you have any comments about this report, please contact the Barnet SACRE Clerk Maria Gabrielczyk via e-mail at [mariagabrielczyk@gmail.com](mailto:mariagabrielczyk@gmail.com)**

Jan McGuire Adviser for RE (Religion and worldviews) Barnet BEL's (February 2025)

16.02.2025