



Standing Advisory Council on Religious Education

Annual Report 2023/2024

This report covers the work of the Cumbrian SACRE
serving the schools in Cumberland and Westmorland & Furness
for the period September 2023 to August 2024



Westmorland
& Furness
Council

Working for **Cumberland Council** and
Westmorland & Furness Council

Contents

1. Words from the Chair

It's hard to believe that I have been in the role of Chair for a year, it's been quite a whirlwind. I am grateful for the many opportunities I have had to engage with teachers, attend training, and especially to meet students. It is always a delight to visit a school. This year I have had the privilege of doing that many times. Taking part in a faith panel with other SACRE members or hearing from students during a meeting, SACRE generates so much energy as their enthusiasm is infectious.

One of the highlights of the year for me was our annual RE conference in June 2024 which was attended by nearly 100 delegates. It provided something for teachers from early years through to secondary. There were a mixture of talks, workshops and a range of engaging, interactive sessions. As usual it was well received and there has been lots of positive feedback.

There are two key things that have happened this year. The first is that our new Locally Agreed Syllabus which will become legal in September in 2024. SACRE has been supporting schools to prepare for implementing it and continues to engage with schools to help strengthen teachers' confidence and skills in delivering it. The syllabus has been carefully crafted to provide a way forward for RE for our schools and SACRE is committed to supporting schools across Cumberland and Westmorland & Furness in its use for the years ahead. An example of this has been the collaboration with the Early Years Team Leader to produce RE subject leader guidance which was launched at the SACRE conference.

The second has been updating and agreeing our development plan. This has been a considerable piece of work but has resulted in a valuable document that will ensure SACRE is focused on key priorities. There are two particular aspects of our work that we are committed to strengthening; these are Collective Worship and Community Cohesion. A survey of schools about their Collective Worship has provided valuable information about how best we should approach the topic and provide support and resources. The need for SACRE to address how it can make a significant contribution to the issue of community cohesion was highlighted during the summer with the distressing riots. We are committed to the idea that ensuring good quality teaching of RE and worldviews is an invaluable positive influence on students. This is what drives the dedication of Cumbrian SACRE members.

My sincere and grateful thanks to all the SACRE members, our LA Officers, David Hodgkiss (Westmorland & Furness Council) and Rachel Laverack (Cumberland Council), our Clerk, Sue McGaw and of course Jane Yates, immediate past chair and RE advisor, to name only a few of her many hats, for all their hard work and dedication. Our SACRE is well respected regionally and nationally. The engagement with schools and teachers and the support it provides to strengthen good quality teaching of RE is tremendous.

Karen O'Donoghue
SACRE Chair

When and where did SACRE meet?

SACRE usually meets once a term. In 2023-2024 the following meetings took place:

2 October 2023 – Penrith Methodist Church (also via Teams)

Attendance: 20 members present (Committee A – 6; Committee B – 2; Committee C – 4; Committee D – 3; Co-opted – 3, LA Officers – 2) This meeting was quorate.

The main agenda items were:

- Appointment of Chair and Vice Chair
- SACRE Development Plan
- Cumbria Revised Agreed Syllabus
- Constitution
- SACRE/RE Conference 2024
- SACRE Annual Report 2022-23

13 March 2024 – Richard Rose Morton Academy (also via Teams)

Attendance: 18 members present (Committee A – 6; Committee B – 2; Committee C – 4; Committee D – 2; Co-opted – 3; LA Officers - 1). This meeting was quorate.

The main agenda items were:

- SACRE Conference 2024
- Survey to Secondary Schools
- SACRE Development Plan
- Local and National Update
- NW RE Hubs

18 June 2024 – County Hall, Kendal (also via Teams)

Attendance: 17 members present (Committee A – 7; Committee B - 3; Committee C – 1; Committee D – 3; Co-opted – 1; LA Officers – 2) This meeting was quorate.

The main agenda items were:

- Feedback from SACRE Conference
- EY Subject Leader Guidance
- Collective Worship Survey
- SACRE Development Plan
- Northwest RE Hubs

When are future meetings?

Autumn meeting – 9 October 2024 – University of Cumbria (Carlisle)

Spring meeting – 11 March 2025 – Voreda House, (Penrith)

Summer meeting – 4 June 2025 – venue to be arranged (Cumberland)

The new [SACRE Development plan 2024-2029](#) identifies that the main areas of focus for 2024-2025 will be to:

- Evaluate the new SACRE Development Plan 2024-2029 and reporting progress at each termly SACRE meeting
- Continue to support and consult on the implementation of the Cumbrian Agreed Syllabus (2023) through the annual RE survey, CPD and Cumbrian RE Teacher Group. This includes signposting schools to RE audits and national [RE award programmes](#) e.g. Religious Education Quality Mark (REQM)
- Develop a programme of CPD to support and review resources to improve the provision and quality of Collective Worship with the Assistant Education Director for Carlisle Diocese. This includes the introduction of the new NASACRE SMSC Toolkit
- Review current guidance for Collective Worship and revise where necessary
- Organise the annual Cumbria SACRE RE conference in June 2025 with a theme around cohesion of the community, and a focus on Collective Worship.
- Develop processes to find out how schools provide RE to all learners in KS4 and KS5 and how well learners are doing in KS4 and KS5 examinations
- Continue to collate Ofsted summaries relating to RE as part of monitoring for Cumberland, and start collating summaries for Westmorland & Furness
- Complete a school website summary report
- Develop a system to be fully equipped to respond to requests for determinations

- Consult about the current religious, ethnic and cultural diversity in the local area, in conjunction with local interfaith groups and the LA, being more informed about the work of the LA in terms of community cohesion
- Develop stronger relationships with local interfaith groups and individuals through circulating the half termly SACRE newsletter and attending relevant events to explore opportunities to develop and promote initiatives with local interfaith groups for schools. Schools to be informed of the distinctive needs and opportunities created by local diversity and the impact on the provision for RE and Collective Worship
- Continue to be informed of national guidance from NASACRE and the LA in relation to community cohesion, Freedom of Religion or Belief (FoRB) and rights respecting, SMSC and British Values
- Encourage schools to report RE in their newsletters, websites and social media – as part of promoting high quality RE
- Continue to increase teacher awareness of SACRE through newsletter, social media and other LA channels, including School Improvement and Governor Services.
- Continue to raise profile and involvement in National Association for SACRE and other national RE organisations, including the regional RE Hub and North West SACRE Hub
- Continue to offer and promote school speaker visits by Cumbrian SACRE members, attending RE Hubs Accredited CPD and featuring on the school speaker section for the North West of the [RE Hubs website](#)

2. A section on RE

What are SACRE's Responsibilities?

To advise the Local Authority (LA) on matters connected with: RE CW etc

1. Religious Education (RE) This year SACRE has:

- Completed the working practices of the new Cumbrian SACRE, including a new constitution.
- Developed a programme of CPD to support the introduction and implementation of the new Locally Agreed Syllabus.
- Established joint working with the Assistant Education Director for Carlisle Diocese for CPD delivery.
- Completed the NASACRE self-evaluation process and the new Development Plan (2024-2029)
- Created a new format half termly newsletter
- Collaborated with the Early Years Team Leader to produce RE subject leader guidance to support the Cumbrian Agreed Syllabus for RE. This was launched at the SACRE conference.
- Collated summaries of Ofsted comments relating to RE from Cumberland Council
- Trialled a system for auditing school websites for evidence of RE and Collective Worship
- Organised the annual Cumbria SACRE RE conference in June 2024.
- Devised a survey for secondary RE Leads with a focus on recruitment, retention and training in RE. The report was circulated to all schools and used to inform future CPD planning
- Devised a survey focused on Collective Worship provision for SACRE to be reported to SACRE and inform CPD in autumn 2024
- Continued to disseminate of the Virtual Voices in Religious Education (VVRE) project in conjunction with Cumbria Development Education Centre (CDEC) through CPD and newsletters
- Continued to increase teacher awareness of SACRE through newsletter, social media and other LA channels, including School Improvement and Governor Services.

- Continued to raise profile and involvement in National Association for SACRE and other national RE organisations.
- Engaged with NASACRE through the new regional RE Hubs and North West SACRE Hub
- Continued involvement with Cumbria Development Education Centre, developing their website support for RE.
- Continued to develop a network of RE teachers across Cumberland and Westmorland & Furness through CPD and online channels.
- Encouraged SACRE members to include SACRE in any community cohesion work they do, e.g. Inter Faith Week, Holocaust Memorial Day.
- Continue to offer school speaker visits by Cumbrian SACRE members encouraging them to attend RE Hubs CPD to be featured on the school speaker section of the website.

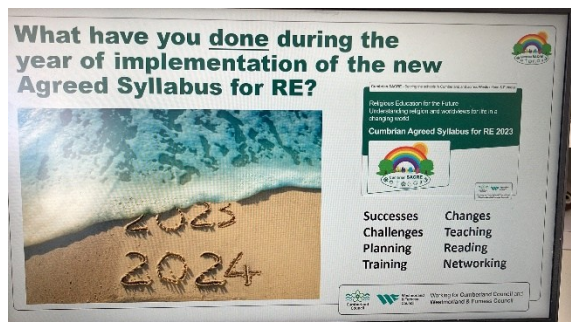
What Professional Development Opportunities have there been?

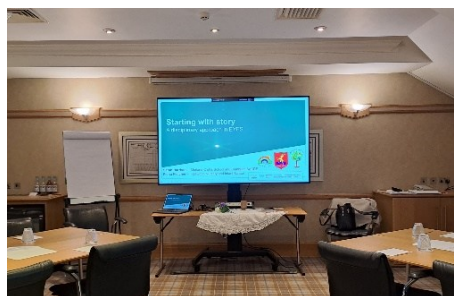
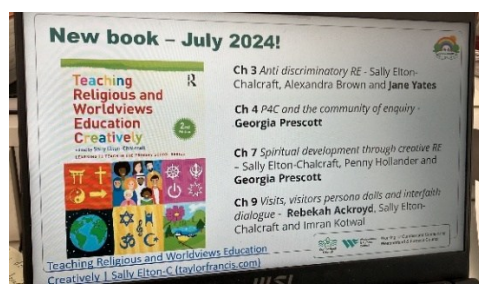
The following courses for RE ran:

- Religious Education for the Future - 08 Nov 2023 (13:00 - 14:30) – 30 attended
Provider – Jane Yates and Laura Watson
- Religious Education for the Future - 08 Nov 2023 (16:00 - 17:30) – 26 attended
Provider – Jane Yates and Laura Watson
- Disciplinary Approach to Religious Education (Theology) 08 Feb 2024 – 19 attended
Provider – Jane Yates and Laura Watson
- Disciplinary Approach to Religious Education (Philosophy) 22 Feb 2024 – 19 attended
Provider – Jane Yates and Laura Watson
- Disciplinary Approach to Religious Education (Human Sciences) - 14 Mar 2024 – 19 attended
Provider – Jane Yates and Laura Watson
- Religious Education for the Future (school governors) – 30 April 2024 (18:00 – 20.00) – 17 attended
Provider – Jane Yates and Laura Watson

4 June 2024 - SACRE/RE Conference – Guest Speaker Julia Diamond-Conway, National RE Adviser (RE Today) Venue: North Lakes Hotel, Penrith – 96 delegates attended.

Additional workshop presenters included members of Cumbrian SACRE and Grace Lockrobin, Co-director for SAPERE, the national charity for P4C. The conference was chaired by Karen O'Donoghue (Chair) and Jane Yates (RE Adviser to Cumbrian SACRE). A workshop about realising the potential for school speakers was led by SACRE member Rebekah Ackroyd (University of Cumbria) with Karen O'Donoghue (Bahai) Wendy Ridley (Buddhist) and Shelia Gewolb (Jewish). An early years session to launch the new RE subject leader guidance for EYFS was led by Sarah Harrison (SACRE C of E member) and Fiona Fletcher (Inglewood Infants School).





Photos: Conference delegates and presenters,

3. A section on Collective Worship

Collective Worship in community schools
 Collective Worship was evaluated as part of the NASACRE self-evaluation process and is one of the main five aims of the new Cumbrian SACRE Development Plan (2024-2029) to promote improvement in the quality and provision of Collective Worship. During May 2024, a survey was carried with headteachers to help SACRE understand local issues of delivering pupil entitlement to Collective Worship and the challenges schools face in providing it. A report of the survey was shared with SACRE members and schools, and will be used to inform CPD for Collective Worship during autumn 2024. This CPD will be led by the RE Adviser to Cumbrian SACRE, Jane Yates and the Diocesan Deputy Director of Education, Laura Watson as part of a collaborative approach to supporting all schools in Cumberland and Westmorland & Furness. The Cumbrian SACRE [Guidance to Schools on Collective Worship](#) (2020) will also be reviewed and revised as necessary.

Determinations - To allow any exception to the law that Collective Worship be broadly or mainly Christian SACRE has received no requests for a determination for exemption from the law. As per the Cumbrian SACRE Development Plan (2024-2029), a system will be developed to fully respond to any requests for determinations.

SACRE hears any complaints brought to the LA about RE and collective worship. No complaints from parents were received this year.

What is the RE and Collective Worship support for Cumbrian schools?

For secondary and primary schools please email Rachel Laverack, LA Support Officer – Cumberland, rachel.laverack@cumberland.gov.uk or David Hodgkiss LA Support Officer – Westmorland & Furness, david.hodgkiss@westmorlandandfurness.gov.uk

4. A section on examinations for 2024

GCSE Results 2024

Westmorland & Furness

Number of pupils entered	% grade 4+	% grade 7+
807	68%	22%

Cumberland

Number of pupils entered	% grade 4+	% grade 7+
580	66%	Not known

National

Number of pupils entered	% grade 4+	% grade 7+
223034	72.5%	31.1%

A Level results 2024

Westmorland & Furness

Number of pupils entered	% A* to C
39	72%

Cumberland

Number of pupils entered	% A* to C
52	48.1%

National

Number of pupils entered	% A* to C
16622	78%

Including a results section in our annual report is new for Cumbrian SACRE. In spring 2025 a meeting was organised with Deborah Weston (Research Officer for NATRE) with the RE Adviser to SACRE, and both LA Officer to explore data from individual schools about GCSE and workforce census data. This was further discussed by the SACRE working group, with feedback to the main committee. Connections with a secondary adviser have also been made, and general issues of concern will be communicated to headteachers. This will be reported in more detail in the 2024-2025 annual report.

N.B. Some schools offer A Level Philosophy instead of A Level Religious Studies.

JOINT COUNCIL FOR QUALIFICATIONS

Provisional GCSE (Full Course) Results (9-1 Only) - June 2024 (England Only)

CUMULATIVE PERCENTAGES of Subject Results by Grade

Category	Subject	Year	Number Sat	9	8	7	6	5	4	3	2	1	U
GCSE													
England 9													
- 1	Religious Studies	2024	223034	7.9	18.8	31.1	47.9	62.0	72.5	85.2	93.2	98.1	100
GCSE													
England 9													
- 1	Religious Studies	2023	222412	7.7	18.5	30.6	47.3	61.3	72.2	86.0	94.0	98.4	100
GCSE													
England 9													
- 1	Religious Studies	2019	227913	7.4	17.9	30.5	46.6	60.9	72.3	86.3	94.3	98.5	100

JOINT COUNCIL FOR QUALIFICATIONS

Provisional GCE A Level Results - June 2024 (All UK Candidates)

CUMULATIVE PERCENTAGES of Subject Results by Grade

Category	Subject	Year	Number Sat	A*	A	B	C	D	E	U
A Level	Religious Studies	2024	16622	6.0	25.7	54.9	78.8	92.6	98.2	100
A Level	Religious Studies	2023	16853	6.3	26.3	56.2	79.6	92.5	98.1	100
A Level	Religious Studies	2019	19406	4.3	21.9	50.5	76.7	92.1	98.2	100

5. A section on links with other bodies

SACRE has continued to develop strong links with Cumbria Development Education Centre (CDEC), RE Hubs and AREIAC. The RE Adviser for Cumbrian SACRE is also the North West RE Hubs Lead which has led to increased links and promotion of SACRE on a regional and national level. Part of this role includes leading the accredited training of school speakers and places of interest for RE Hubs. Currently 9 school speakers from Cumbria are registered on the North West [RE Hubs School Speaker page](#) (3 from Cumbrian SACRE and a further 6 who were involved in the Virtual Voices in Religious Education Project). This has been a wonderful way to ensure the sustainability and development of the VVRE Project.

Two schools in Westmorland & Furness were chosen to be the lead schools for the AREIAC Young RE Ambassadors Project with a focus on advocacy work for Freedom of Religion or Belief (FoRB). These two schools are The Queen Katherine School and Grayrigg C of E Primary School, both in the Kendal area. The project was officially launched in spring 2024 at the Quaker Tapestry Museum and presentations about the project have been made at NASACRE, AREIAC and Cumbrian SACRE conferences during the summer 2024. This has raised the profile of both Cumbrian SACRE and these two schools. Both schools will be involved in an online parliamentary event during November 2024 and a special parliamentary roundtable event at Westminster in June 2025. Information and videos about the project can be found on

the [project page](#) of the AREIAC website with a [specific section](#) for the activities of the two schools in the North West. Through the project, connections have been made with the Redbridge [Ambassadors for Faith and Belief\(AfAB\)](#) programme. This has resulted in a termly virtual session for KS2 classes in Cumbria – as highlighted in the photos at the end of this report. In her role as North West RE Hubs lead, Jane Yates is supporting both of these schools on the project. It has been a really productive outreach opportunity.

Cumbria SACRE has continued to develop links with Humanist UK. During 2024, the Humanist member of SACRE became a contracted teacher trainer for Humanist UK and has since led both national and individual school CPD for schools and ITT. This will also include CPD for teachers in Cumbrian in autumn 2024. The Humanist member is currently undergoing training and mentoring to become a national trainer for school speakers for Humanist UK.

6. A section on other areas of SACRE involvement locally
Virtual Voices in Religious Education (VVRE) project

The project was originally a collaboration between Cumbria SACRE and Cumbria Development Education Centre (CDEC) and was funded by Culham St Gabriel’s Trust. The VVRE Project page and resources can be accessed [here](#). Despite the funded aspect of the VVRE project completing in December 2022, the concept of providing virtual visits to schools has continued to grow for schools across Cumbria. It has also impacted on increasing numbers off face-to-face visits to schools. The new RE Hubs website was timely in providing sustainability to the project as many of our ‘community of voices’ have attended RE Hubs Accredited CPD and now feature on the North West section for school speakers on the website. During Inter Faith Week 2023, an online event was held for teachers to meet school speakers. Another particular highlight was a joint ‘faith and belief panel event for Year 12 organised by Keswick School which involved 4 Cumbrian SACRE members. Due to the success of this event, it will be organised again in 2025 with a larger number of worldview voices.

Title and date of event	Worldview voices involved	School	Age Range
Faith and Belief Panel February 2024	Christian: C of E; Jewish, Sufi Muslim, Baha’i, Buddhist, Humanist	Keswick School	Year 12 and some Year 10s



Pupils from Keswick School taking part in the ‘multi-faith and belief’ panel event with SACRE members.

7. A section on SACRE's own arrangements (statutory responsibilities)

Who was on Cumbria SACRE in 2023-2024

Chair: *Karen O'Donoghue*

Committee A: Christian denominations (other than Church of England) & other faiths

Mohammed Dhalech (Muslim)

Wendy Ridley (Buddhist)

Sheila Gewolb (Jewish)

Jane Yates (Humanist)

Karen O'Donoghue (Baha'i)

Rev David Milner (Methodist)

Rashmi Manemi (Hindu) Substitute Shweta Marali

Micheal Watmough (Quaker)

Committee B: Church of England

Richard Cox

Sarah Harrison

Laura Watson – Substitute Charlotte Tudway

Committee C: Teacher Associations

James Douglas (NUT)

Irene Roberts-Green (Vice Chair) (NAHT)

Brian Eaton (VOICE)

Bernadette Little (NASUWT)

Katherine France (NATRE)

Committee D: Local Authority

Neil Hughes (Liberal Democrat)

Elaine Lynch (Labour)

Sue Sanderson (Labour)

Christopher Southward (Labour)

Co-opted Members

Georgia Prescott

Vicky Bunter (Dowdales School)

Carolyn Reade

LA Support Officer (W&F) David Hodgkiss

Clerk to SACRE Sue McGaw

LA Support Officer (Cumberland)

Rachel Laverack

What is the SACRE Budget?

SACRE's budget covers the cost of meetings, venue expenses, supply cover for teacher members, postage, photocopying, travel expenses, and subscription costs for membership of national organisations for RE. Additional resources are obtained from the County Council when necessary for the review, development and publication of the revised Agreed Syllabus.

In the year 2023-2024 the total amount spent was £4,386 (Travel expenses £782; Venues; £146.80 Supply £127.20; Training fees £1130; Subscriptions £450; Professional RE Adviser Fees £1750).

This document is the annual report for the academic year 2023-2024.

Anyone wishing to receive the minutes of termly meetings can contact Sue McGaw by email sue.mcgow@cumberland.gov.uk or visit Cumbria SACRE's website:

Useful Websites

<https://www.cumberland.gov.uk/schools-and-education/support-and-information-schools/standing-advisory-council-religious-education>

<https://www.westmorlandandfurness.gov.uk/schools-and-education/information-schools/standing-advisory-council-religious-education>

<http://www.nasacre.org.uk/>

<https://www.re-hubs.uk/>

<http://www.reonline.org.uk/>

add natre website

Twitter: @CumbriaSACRE. We welcome all schools in Cumbria to share photographic evidence of RE and Collective Worship using the hashtag #CumbriaSharingRE. The Twitter account also follows the key local and national organisations for RE and will re-tweet relevant updates. Examples of RE in schools is shared in our new style half termly newsletter. Feedback from headteachers was to have a regular, shorter newsletter.

Cumbrian SACRE - Newsletter



February 2024

We are delighted that feedback about the new format of the SACRE newsletter has been positive. If you missed our previous newsletter in January, you can read it [here](#). SACRE newsletters are sent out to all schools and are also available on the SACRE section of your Council website. See overleaf.

Cumbria RE Teachers Group (FREE): Nearly seventy primary and secondary RE teachers are registered in this group. Twenty attended our recent online meeting in February where Katherine France and Jane Yates shared highlights and valuable learning from NATRE's national Strictly RE conference. This ranged from Hermeneutics from 4-7, use of ChatGPT in RE, and diversity in Christianity. It was agreed the next local group meeting on 18th April will focus on **assessment**. Please register on the RE Hubs website [here](#). A full summary of the meeting is also sent out to members of this group.

Do you teach RE to three or more year groups at once? [Sign up](#) to find out about an upcoming networking opportunity.

Disciplinary Approach to RE: It's been valuable to meet so many RE teachers face-to-face on recent CPD in Kendal and Wigton. In the Theology CPD, participants had the opportunity to experience various tools for interpreting images, texts and stories from different schemes or units of work. Delegates were also able to work together in small groups and share how they have reviewed their long-term whole school RE planning against the new Cumbrian Agreed Syllabus for RE 2023. It is encouraging to hear that teachers are feeling reassured their existing plans can be **re-framed and enhanced** through a disciplinary approach, with religious literacy at the heart.

Secondary School Survey: Thank you for completing the recent online survey on recruitment, retention and training of RE across Cumbria. The findings will be discussed at our next SACRE meeting in March. If you haven't yet completed the survey, please click [here](#). The deadline has been extended to 29 Feb 2024.

Spotlight on upcoming CPD

FREE online governor training on 30th April (6-8pm): *Is your school ready to implement the new Cumbria RE syllabus?* Book via Cumberland School Development

Diary Dates 2024 (Book via School Development unless otherwise specified)

27th Feb: FREE online SAPERE Consider P4C and RE. 2pm-2.45pm Book [here](#)

14th March: Disciplinary Approach to RE (Human Sciences) *Greenhill*

18th March: Disciplinary Approach to RE (Human Sciences) *J36 Rural Action Centre*

18-22nd March: Life exhibition in Barrow. More information [here](#).

20th March: FREE online SAPERE webinar on P4C and SEND with a focus on RE and science. 3.30pm - 4.45pm. Book [here](#).

18th April: Cumbria RE Teachers Group 4pm. Focus: Assessment

28th April: National MAT Leads RE Network Meeting - download filter [here](#)

30th April: FREE School Governor CPD. *Is your school ready to implement the new Cumbria RE syllabus?*

22nd May: Spirituality, RE and Good Learning in Secondary School with Lat Blaylock (Chorley) More information [here](#).

4th June: Cumbria SACRE RE Conference North Lakes Hotel.



Working for Cumberland Council and Westmorland & Furness Council

Cumbria SACRE Newsletter

#CumbriaSharingRE

Religious festivals in March: Teaching and learning about religious festivals will be more authentic when planned during the period of the festival, especially if members of your school community are celebrating. March is a busy month for festivals starting with Ramadan (Muslim) on 11th, Naw Ruz (Baha'i New Year) 20th, Purim (Jewish) on 24th, Palm Sunday and Holy Week (Christian) from 24th to 30th, and Holi (Hindu) on 25th March.

Supporting the needs of your Muslim pupils and staff during Ramadan fasting: The routine of Muslim families is entirely different during Ramadan. Young children may well become more tired or excited during school time, even if they are not fasting themselves. Those students who are fasting may become very tired and thirsty during the school day.

Invite school speakers to RE lessons or as a sixth form enrichment opportunity: Teachers from Keswick School started this half term with a panel of faith and belief speakers for their A Level Religious Studies students. RE Hubs speakers [here](#).

Meet young Muslim Ambassadors for Faith and Belief. Muslim AFAB sixth formers from London will meet virtually with KS2 classes on 6th March between 2pm-3pm. If your class is interested, please email reteacherscumbria@outlook.com.

Get involved in a Parental Engagement Project for RE: Schools in the Morecambe Bay area are invited to join an exciting new project called 'Identity Unboxed' with the **Faith and Belief Forum**. Please see the website [section](#) for more information and expression of interest form.

Is your school a UNICEF Rights Respecting School? Cumbrian schools are taking the lead on a new AREIAC Project funded by Culham St Gabriels to support Young Ambassadors for Freedom of Religion or Belief (FoRB). Email reteacherscumbria@outlook.com for more information.

Apply for funding to support your RE: Monkway Primary School in Whitehaven were successful in a [grant application](#) for £500 and were able to buy artefacts to support their RE from [Muslim Learner Services](#) and [REonDemand](#).

Help inform the future of RE: Take part in national RE surveys. A new Personal Knowledge survey by the University of Huddersfield is available on the [RE Hubs website](#).

Take your RE leadership to the next level: Culham St Gabriel's run a successful and fully funded leadership programme for RE. Information [webinar](#) 27.02.24. Application deadline 22.03.24. Full information [here](#).

Book your place on the annual Cumbrian SACRE RE conference on 4th June 2024: A detailed programme will soon be circulated to schools by Westmorland & Furness School Development. Keynote speaker: RE Today National Adviser, [Julie Diamond-Corway](#).

See the [North West section](#) of the RE Hubs website to [upskill](#) yourself through CPD, news, blogs, free resources, research, grants or find opportunities to [enrich](#) RE in your classroom through accredited school speakers, places of interest and local groups. See [new Together for Humanity: resources](#) for contentious topics

Cumbrian SACRE websites with statutory and non-statutory guidance for RE and Collective Worship:

Cumberland Council website
Westmorland & Furness website

Facebook: [RE Teachers in Cumberland and Westmorland & Furness](#), 162 members
Twitter X: [@SACREcumbria](#)

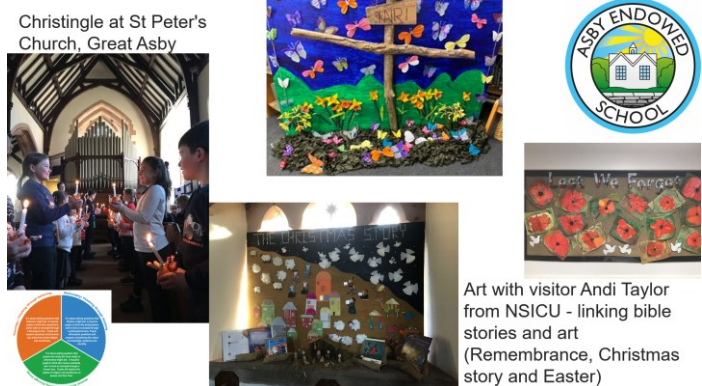
Facebook: RE Teachers in Cumberland and Westmorland & Furness. This is a closed social media group for primary and secondary teachers to enable an information exchange for RE and CW, training, events and new resources. Cumbria SACRE members also use this as a forum to keep teachers updated. Current membership is 177.





Visit to London by KS2 to Westminster Abbey



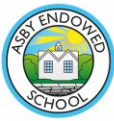

Christingle at St Peter's Church, Great Asby



Art with visitor Andi Taylor from NSICU - linking bible stories and art (Remembrance, Christmas story and Easter)

Hindu experience day – exploring Hindu weddings



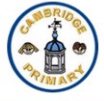
Shap C of E School



Visit to local St Michael's C of E Church, Shap to explore Baptism



Diwali Celebrations: in family groups, the children made Diva Lamps and Rangoli Patterns; they learned the story of Rama and Sita, and took part in Diwali dance and drama



Visit by Jewish SACRE member, Shelia Gewolb



Visits, visitors and creative activities in RE



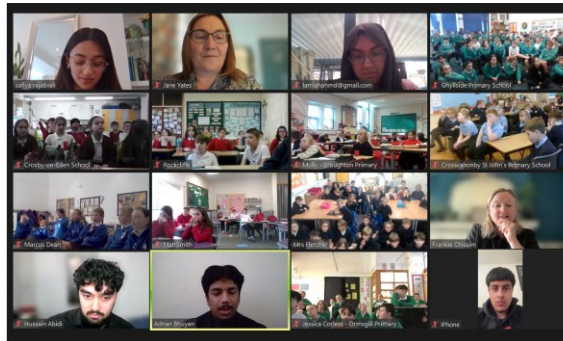
Visiting our local church to meet the vicar and find out about some things that take place there during a church service.



Handling a range of examples of crosses and designing our own

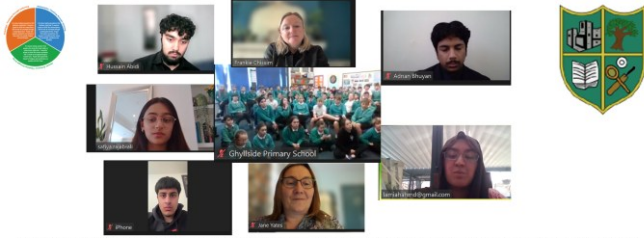


Exploring special books: The children had looked at examples of the bible and Qur'an, listened and responded to stories from both.



Human Sciences – many schools engaging with Ambassadors for Faith and Belief (AfABs)

Conclusion to special books: Looking at and organising artefacts into groups according to their links with Christianity and Islam



"The opportunities that the school provides for pupils' **personal development** is a **strength** of Ghyllside Primary. For example, pupils appreciate the unique chances that they have to video call with older students in a partner school to learn more about these students' varying **cultures and beliefs**. This **enhances pupils' knowledge** of modern Britain. It also builds a sense of **respect** for those from different backgrounds." Ofsted Report March 2024 (Ghyllside Primary School, Kendal)



You-questions
for Redbridge
Muslim AfABs
from KS2 pupils
in 10 schools in
Cumbria and
one in Devon

- Do you baptise or equivalent of baptism?
- Do you have a different routine during Ramadan?
- Do you get hungry during Ramadan? Are you allowed to drink juice?
- How do you feel about your religion?
- Do boys and girls wear different clothes?
- Do you have to fast?
- Do children get to choose their religion?
- Is there a hell if there is a heaven?
- Are the 5 Pillars like the 10 commandments?
- Are you allowed to change your religion?
- What's inside the big box in Mecca?
- Do you pray as a family at home?
- How do you wash before prayer?
- What happens if you break any rules?
- What are the 99 names of God?
- How do you say prayers?
- What do you think about the soul?
- What do you think happens when you die?
- Do you believe in an afterlife?

Symbol credit: @booksatpress



You-questions
for Redbridge
Jewish AfABs
from KS2 pupils
from Ghyllside,
Ormsgill and
Rockcliffe
schools

- Do you celebrate Christmas or Easter?
- Is there anything you don't like about Judaism?
- Does G-d have a name?
- What's your favourite Jewish food?
- What are your thoughts on other religions?
- Do you have any friends from other religions?
- Is Jesus important to you as a Jewish person?
- What is the most important Jewish rule for you?
- Do you have a special ceremony when babies are born?
- Do you feel you get treated differently for being Jewish? If so, do you mind?
- What's your daily life as a Jewish person?

Symbol credit: @booksatpress

With thanks to Cumbrian schools for photos at the Cumbria SACRE Primary RE conference 2024. These photos specifically highlight a disciplinary approach to RE as introduced in the new agreed syllabus.

SACRE is pleased to receive photographic, written or anecdotal evidence of good work in RE and Collective Worship in Cumbria's schools. If you have things you wish to share please contact Sue McGaw on 01228 226805, email sue.mcgow@cumberland.gov.uk

Non-members are welcome to attend, to observe SACRE meetings. Please contact Sue McGaw (email sue.mcgow@cumberland.gov.uk) for confirmation of times and venues.

Do you have any comments on this SACRE Report?

Responses to this Annual Report from school governors, elected members, head teachers, teachers or members of the public are welcomed by SACRE. Please email Rachel Laverack, LA Support Officer – Cumberland, racheld.laverack@cumberland.gov.uk or David Hodgkiss, LA Support Officer – Westmorland & Furness, david.hodgkiss@westmorlandandfurness.gov.uk