



## **ANNUAL REPORT 2020-21**

### **EALING STANDING ADVISORY COUNCIL ON RELIGIOUS EDUCATION**

**January 2022**

## 1. Introduction

This Annual report is presented in the new format developed by NASACRE in conjunction with the DfE for use from September 2021.

### Table of contents

Section		Page
1.	Introduction <ul style="list-style-type: none"><li>- Foreword from the Chairs of SACRE 2020-21</li><li>- Ealing SACRE work plan 2020-21</li></ul>	3-4
2.	Religious education (statutory responsibilities) <ul style="list-style-type: none"><li>- Agreed syllabus and RE in schools</li><li>- Standards and monitoring of RE</li><li>- Teacher training and advice to schools</li><li>- Other information</li></ul>	4-5
3.	Collective worship (statutory responsibilities) <ul style="list-style-type: none"><li>- Standards and monitoring of collective worship</li><li>- Determinations</li><li>- Other information</li></ul>	5-6
4.	Links to other bodies	6
5.	SACRE involvement locally	6
6.	SACRE's own arrangements <ul style="list-style-type: none"><li>- Professional and administrative support</li><li>- Membership and recruitment</li><li>- Attendance</li><li>- Training</li><li>- Finance</li></ul>	6-8
7.	Appendices <ul style="list-style-type: none"><li>- Table of RS GCSE and A level results</li><li>- Ealing SACRE members 2020-21</li><li>- Circulation details for the Annual Report</li></ul>	9-10

## 1a. Foreword from the Chairs of SACRE 2020-21

*Welcome to the Annual Report of the Ealing Standing Advisory Council on Religious Education (SACRE) 2020-21.*

*We would like to thank all of SACRE members, LA officers, schools and teachers for all of the work undertaken with collective worship and teaching religious education in the borough this year, especially given the continuing challenges of Covid 19.*

*Through the excellent support of Democratic Services officers, we were able to meet online and continue our work very effectively. Our schools have been supported to implement our new Agreed Syllabus and SACRE members met virtually with school leaders as part of the determination renewal process.*

*Networks for primary and secondary RE teachers have also continued online enabling colleagues to work collaboratively and share good practice. We are also very proud of the large number of students in Ealing who were awarded Teacher Assessed Grades for Religious Studies GCSE and A level this year.*

*We were very sorry to say good-bye to two long serving SACRE members, Dr Elizabeth Day and Marion McNeil and would like to thank them for their valuable contributions to Ealing SACRE over many years.*

*We were also delighted to welcome several new members to SACRE this year and hope that they will enjoy being part of our continuing work as a community to support our schools, children and young people in all aspects of our SACRE work.*



*Cllr Tariq Mahmood, Chair of the LB of Ealing SACRE (September 20 -May 2021)*

*Cllr Harbhajan Kaur Dheer, Chair of the LB of Ealing SACRE from May 2021*

## 1b. SACRE work plan 2020-21

There were three SACRE meetings held in the academic year 2020-21. Due to Covid restrictions the meetings were held online. The table below includes an overview of the content of the meetings. Full agendas and documentation can be found at: [CMIS > Committees > Standing Advisory Council on Religious Education](#)

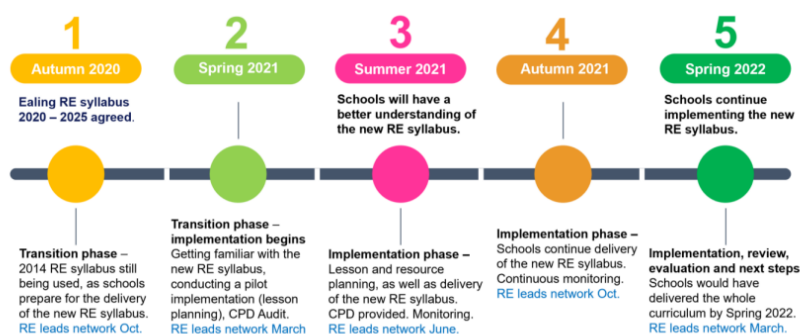
	Autumn 2020 Thursday 12 <sup>th</sup> November 2020	Spring 2021 Tuesday 23 <sup>rd</sup> February 2021	Summer 2021 Tuesday 8 <sup>th</sup> June 2021
Collective worship (reflection)	Review of Reflection guidance (LP)	Draft revised guidance Revised guidance completed and added to EGfL	
Determination applications	Update on determination schedule (SI/AD) Review of determination guidance (LP). Covid amendment re visit	Revised determination guidance (Covid) Update on determination schedule Determination applications Lady Margaret Primary School Featherstone Primary School	Update on determination schedule Determination applications Clifton Primary School Three Bridges Primary School Stanhope Primary School
RE guidance for schools	Documents to be reviewed (LP) Verbal update	Documents to be reviewed	Documents to be reviewed
Agreed syllabus	Update on implementation Advice on teaching, teaching materials, teacher training (MT/EL)	Update on implementation Advice on teaching, teaching materials, teacher training	Update on implementation Monitoring report Advice on teaching, teaching materials, teacher training
Annual report	Draft annual report (LP)	Final annual report (sent to DfE, NASACRE and EGfL)	
Constitution	Review of the constitution (LP)	Draft revised constitution	New constitution agreed
Membership	Update on membership and vacancies (Chair/clerk)	Update on membership and vacancies	Update on membership and vacancies
Local and national updates	Report on national updates (LP) Local updates from SACRE adviser and members (LP and all)	Report on national updates Local updates from SACRE adviser and members (LP and all) Hinduism in RE in UK schools	Report on national updates Feedback from NASACRE conference Local updates from SACRE adviser and members

## 2. Religious Education (statutory responsibilities)

### 2a. The local agreed syllabus and RE in schools

The Ealing Agreed Syllabus for religious education 2020-25: Religions and worldviews: Believing, Behaving and Belonging was agreed at an Agreed Syllabus Conference held online on 23 July 2020. The new syllabus was approved at Cabinet on 13 October 2020.

As the new syllabus, which is a complete revision from the previous syllabus, was agreed at a late stage in 2019-20, a transition period was agreed up to summer 2021 from which time the syllabus should be taught in full.



The new syllabus has two documents: **Overview** and **Teaching Units** and there is a full implementation guide. All documents relating to the Agreed Syllabus can be found at: [RE curriculum | Ealing Grid for Learning \(egfl.org.uk\)](#)

## **2b. Monitoring the Agreed Syllabus**

In 2020-21 the emphasis was on supporting schools to familiarise themselves with the new syllabus and plan for implementation from summer 2021. Further monitoring of implementation will take place in 2021- 22.

## **2c. Standards and monitoring of RE; Teacher training and materials and advice for schools**

Termly meetings for subject leaders of RE in primary and special schools led by Mirela Temo, ELP Adviser, took place online during 2020-21 due to Covid 19. The meetings were held on 15 October 2020, 11 March 2021 and 10 June 2021. Additional CPD sessions were also held on 7 May and 27 May in partnership with RE Today. 47 out of 80 primary schools have purchased the RE Today scheme of work which have been matched and adapted to the Ealing Agreed Syllabus.

Participants were given opportunities to:

- explore practical strategies for teaching and learning in the subject
- consider how to plan for effective learning and teaching in RE
- analyse how and why there should be assessment in RE and how this can be done effectively
- provide feedback on the new Agreed Syllabus and schemes of work

The high school RE subject leader network is run as part of the Ealing Teaching School Alliance (ETSA) programme of subject networks and is led by Emma Lauder, Head of Y13 at William Perkin CE High School. The autumn and spring networks meetings and the summer conference were held online due to Covid 19. The meetings took place on 11 November 2020 and 10 March 2021 and the conference took place on 23 June 2021.

Feedback from both primary and secondary network was very positive.

**2d. Other information** (withdrawals and how the SACRE monitors, advises or supports schools with this, complaints)

SACRE has received no reports of pupils being withdrawn from religious education in 2020-21. There have been no complaints to SACRE in 2020-21 in relation to religious education.

## **3. Collective worship (statutory responsibilities)**

### **3a. Standards and monitoring of collective worship**

During 2020-21 SACRE members supported by the SACRE Adviser Lesley Prior revised the collective worship guidance for schools. The new document was published online and circulated to schools in February 2021. The document and other resources to support collective worship can be found at: [Collective worship | Ealing Grid for Learning \(egfl.org.uk\)](#)

### 3b. Determinations

There are 14 maintained schools in Ealing with a collective worship determination and 4 academies. During 2020-21 five determinations were renewed in maintained schools. Two of the schools had deferred their renewal from 2019-20 due to Covid 19. Academy determinations are renewed through the DfE.

#### Determination renewals in 2020-21

School	Phase	Initial determination granted	Date of last renewal	Date of expiry	School notified	Meeting date for renewal	Comments
<b>2019-20 academic year</b>							
Stanhope Primary	Primary	17.06.2015	17.06.2015	06/06/20	Spring 2020		Deferred to Summer 2021 (Covid 19)
Featherstone Primary	Primary	06.03.1990	17.06.2015	16/06/20	Spring 2020	23/02/21	Deferred to Spring 2021 (Covid 19) Application received
<b>2020-21 academic year</b>							
Lady Margaret Primary	Primary	19.06.89	14.10.2015	13/10/20	Spring 2020	23/02/21	Deferred to Spring 2021 (Covid 19) Application received
Three Bridges Primary	Primary	19.06.1990	09.02.2016	08/02/21	Spring 2021		Deferred to Summer 2021 (Covid 19)
Clifton Primary	Primary	29.06.1993	22.06.2016	21/06/21	Spring 2021		Summer 2021

The SACRE member visit process was adapted to an online meeting and new guidance provided. SACRE members were impressed with the ways that schools had adapted to online collective worship during the partial school closure. The determination documentation is reviewed each year and in response to feedback from schools. It can be found at: [Determination | Ealing Grid for Learning \(egfl.org.uk\)](https://www.egfl.org.uk)

### 3c Other information (withdrawals and how the SACRE monitors, advises or supports schools with this, Complaints)

SACRE has received no reports of pupils being withdrawn from collective worship in 2020-21. There have been no complaints to SACRE in 2020-21 in relation to collective worship.

## 4. Links with other bodies

Ealing SACRE is affiliated to The National Association of SACREs (NASACRE). Login details for the NASACRE website can be obtained from the SACRE clerk. A member of SACRE, Mrs Barjinderpal Lall attended the online NASACRE AGM on 24 May 2021 and produced a report which was presented at the summer SACRE meeting. The SACRE professional adviser is a member of the NASACRE Executive Group and is also a member of many other RE professional bodies and shares information from them at SACRE Meetings. Ealing SACRE also has links with the Ealing Faith and Belief Forum. [Home - The Faith & Belief Forum \(faithbelief.org\)](https://www.faithbelief.org)

## 5. SACRE involvement locally

SACRE did not take part in any Governor training in 2020-21. Advice produced by SACRE is available at: [RE guidance for schools | Ealing Grid for Learning \(egfl.org.uk\)](https://www.egfl.org.uk)

## 6. SACRE arrangements

### 6a. Professional and administrative support and how the LA supports the SACRE (clerking, adviser, links to council initiatives)

SACRE roles 2020-21

Role	Name	Contact details
Chair	Clr Tariq Mahmood	<a href="mailto:MahmoodTa@ealing.gov.uk">MahmoodTa@ealing.gov.uk</a>
	Clr Harbhajan Dheer (from 18 May 2021)	<a href="mailto:DheerHK@ealing.gov.uk">DheerHK@ealing.gov.uk</a>
Clerk	Katie Sullivan	<a href="mailto:Sullivank@ealing.gov.uk">Sullivank@ealing.gov.uk</a>
Professional Adviser	Lesley Prior	<a href="mailto:lesley.prior@london.anglican.org">lesley.prior@london.anglican.org</a>
ELP Quality & Partnerships lead	Angela Doherty	<a href="mailto:adoherty@ealing.gov.uk">adoherty@ealing.gov.uk</a>
ELP Adviser	Mirela Temo	<a href="mailto:mtemo@ealing.gov.uk">mtemo@ealing.gov.uk</a>
ELP Business Support	Saynap Isman	<a href="mailto:ismans@ealing.gov.uk">ismans@ealing.gov.uk</a>

### 6b. Membership, representation & recruitment - quoracy, issues and successes with recruitment

A full list of SACRE members is included in the Appendices. During 2020-21 the constitution was revised with clearer information included in relation to membership and absences. The new constitution can be found at: [SACRE | Ealing Grid for Learning \(egfl.org.uk\)](https://egfl.org.uk)

#### Recruitment of new members

Actions taken during the year reduced the number of vacancies to 5 with 9 new members joining. A useful development to support recruitment was the production of a two-page "Introduction to SACRE" document and a simple application form. The documents provide brief information on the role of SACRE and ensure that prospective members are aware of the expectations and commitments of the role.



Other actions targeted at specific vacancies included:

- direct work by Church of England member and London Diocesan Board representative Mark Newton which resulted in 3 new CE members
- a meeting with the Ealing trade union group to recruit a new member to Group C
- direct contact with appointing bodies in Group A
- requests through the RE teacher networks for members of Groups A-C

A key issue with recruitment is the lack of contact details for appointing bodies in Group A or the lack of response when the group is contacted. Two long serving members resigned as they were moving out of the area. There is good representation of all the main religious and world view groups listed in the constitution.

#### Summary of membership and vacancies 2020-21

Area	Number	Representative groups	Details of authorising body / contact details available	Follow up action	
Membership	40	Other religions & worldviews (A)	20	3/20	Members of group A to provide details of the authorising body
		Church of England (B)	6	Yes	
		Teachers' associations (C)	5	Yes	
		LA group (D)	9	Yes	
Vacancies	5	Church of England	1	Yes	All with contact details have been emailed. Gatekeeping request to be sent to schools as a next step.
		African Caribbean Church	1	Yes	
		Islam Sunni	1	No	
		Sri Guru Ravi Dasia Sabha	1	Yes	
		Teachers' association	1	Yes	

### 6c. Attendance

All SACRE meetings in 2020-21 were quorate. Attendance has improved with online meetings.

#### Summary of attendance (% may refer to a longer period than 2020-21)

Attendance	No of members
80-100%	12
60-79%	8
50-59%	7
<50%	5

Full details of attendance are available at: [CMIS > Committees > Standing Advisory Council on Religious Education](#)

### 6d. Training for SACRE members

SACRE members are encouraged to attend training provided by NASACRE. School based SACRE members or those with other links to education also attend local and national RE training including Diocesan training.

### 6e. Finance given to SACRE for its work

£10k is allocated to SACRE from the Dedicated Schools Grant (DSG). The funding contributes toward the cost of the SACRE Professional Adviser, primary RE network, secondary RE network and other costs e.g., NASACRE membership, NASACRE conference attendance etc

SACRE meetings are clerked by the council's committees' services team as an integral part of the support provided for all formal meetings within the council's meetings programme.

Other leadership time (ELP Quality & Partnership lead) and administration costs e.g., contact with schools re determinations and following up on membership are covered by the Ealing Learning Partnership Business support and leadership budgets. Additional funding was allocated in 2019-20 to cover the cost of the new Agreed Syllabus.





## 7. Appendices

### 7a. Table of GCSE & A Level Religious Studies results 2021

The government cancelled all public examinations at Key Stage 4 and 5 again in 2021 due to the Covid 19 pandemic. Students were awarded grades through the Teacher Assessed Grades (TAG) process. Teachers in Ealing schools used a range of evidence to award grades to students. These grades will not be published but an overview of the number of entries for GCSE and A level has been included below.

#### Key Stage 4

In 5 of the 11 schools without a religious designation (2 maintained schools and 3 academies) the whole cohort sits Religious Studies GCSE. Across Ealing 66% of students were taking RS GCSE in 2021 in state funded schools. In one school no students took RS GCSE in 2021 as they are moving to a two-year course.

GCSE	2017 (A*-C)	2018 (New GCSE)	2019	2020 Centre Assessed Grades (CAG)	2021 Teacher Assessed Grades (TAG)
Number of students / %	1674 (61%)	1473 (52%)	1733 (59%)	2044 (66%)	1923 (57%)
Progress 8	0.43 Above average	0.82 Well above average	0.63 Well above average		
% 9-4 /A*-C	77%	74%	75%		

#### Key Stage 5

120 students took Religious Studies A level in 2021 across 9 Ealing state funded high schools. 72% of the students (86) were in schools without a religious designation.

A level	2017	2018 (New A level)	2019	2020 Centre Assessed Grades (CAG)	2021 Teacher Assessed Grades (TAG)
Number of students / %	147 (11%)	105 (8%)	122 (9%)	111	120
%A-E	100%	100%	97%		
%A-C	80%	87%	71%		
%A-B	57%	53%	40%		

## 7b. SACRE membership 2020-21

Group A: Christian denominations and other religions, denominations of such religions and non-religious beliefs (20 members)		
<b>Christian (4)</b>		
1	<i>African Caribbean Church</i>	<i>Vacancy</i>
2	<b>Free Church Federal Council</b>	Mrs Marion McNeil
3	<b>Roman Catholic (10/05/2016)</b>	Ms Kim Burke
4	<b>United Reformed Church</b>	Rev Susan McCoan
5	<b>Baha'i (1)</b>	Ursula Patel ( <i>new member</i> ) Kian Altmann ( <i>Deputy</i> )
6	<b>Buddhist (1)</b>	Mr Luxman Dissanayake
7	<b>Hindu (2)</b>	Mr Rabindra Pathak
8	Hindu	Mrs Aparna Sharma ( <i>new member</i> )
9	<b>Humanist (2)</b>	Ms Kath Richardson
10	West London Humanist & Secularist	Mr Oliver Murphy
<b>Islam (4)</b>		
11	<b>Islam – Sunni</b>	Mr Kasim Minhas Mr Sikander Minhas ( <i>Deputy</i> )
12	<i>Islam Sunni</i>	<i>Vacancy</i>
13	<b>Islam- Discover Islam</b>	Mr Naif Sheikh Jahed Ahmed ( <i>Deputy</i> )
14	<b>Islam – Shi'a</b>	Mrs Fatemah Moledina ( <i>new member</i> )
15	<b>Jewish (2)</b>	Dr Marianne Izen
16	<b>Liberal Jewish</b>	Ms Megan Dick ( <i>new member</i> )
<b>Ravidassia and Sikh (4)</b>		
17	Ramgarhia Sabha (2)	Mrs Barjinder Lall
18	Ramgarhia Sabha	Mrs Surinder Cholia ( <i>new member</i> )
19	<b>Sikh Missionary Society</b>	Ms Jaswant Kaur Bola
20	<i>Shri Guru Ravi Dass Sabha</i>	<i>Vacancy</i>
Group B – Church of England (6 members)		
1		Rev Canon Mark Poulson
2		Mr Mark Newton
3		Ms Auriol Hale ( <i>new member</i> )
4		Ms Susan Larson ( <i>new member</i> )
5		Ms Susan Marson ( <i>new member</i> )
6		<i>Vacancy</i>
Group C: Associations representing teachers (5 members)		
1	NASUWT	Mr Glen Burchell
2	ELP	Mrs Lori Greenglass
3	NASUWT	Ms Emma Lauder
4	NEU	Mr Stefan Simms
5	NAHT /ASCL	Dr Elizabeth Day
Group D: local authority group (9 members)		
1		Cllr Harbhajan Dheer (Chair)
2		Cllr Tejinder Dhami
3		Cllr Aysha Raza
4		Cllr Tariq Mahmood
5		Cllr Abdullah Gulaid
6		Cllr Theresa Byrne
7		Cllr Sitarah Anjum
8		Cllr Millican
9		Cllr Ball

## 7c Circulation details for the SACRE Annual report

The annual report will be sent to Ealing Council, Executive Director, Children, Adults and Public Health, the DfE, NASACRE and schools, including governors. The report will be available for anyone to view on the Ealing Grid for Learning: [SACRE | Ealing Grid for Learning \(egfl.org.uk\)](https://egfl.org.uk)